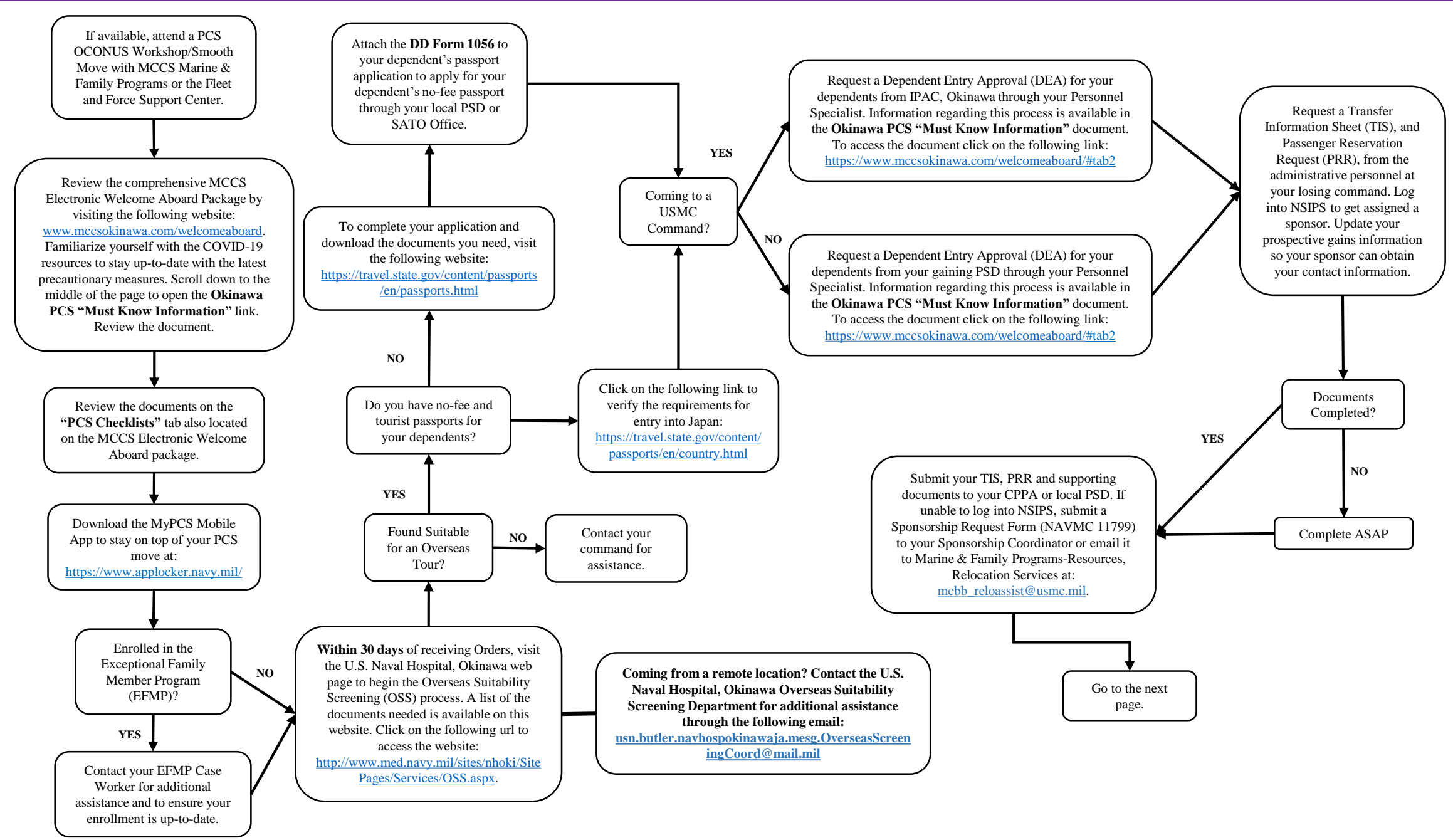


Less than Six Months:

Topics Covered:

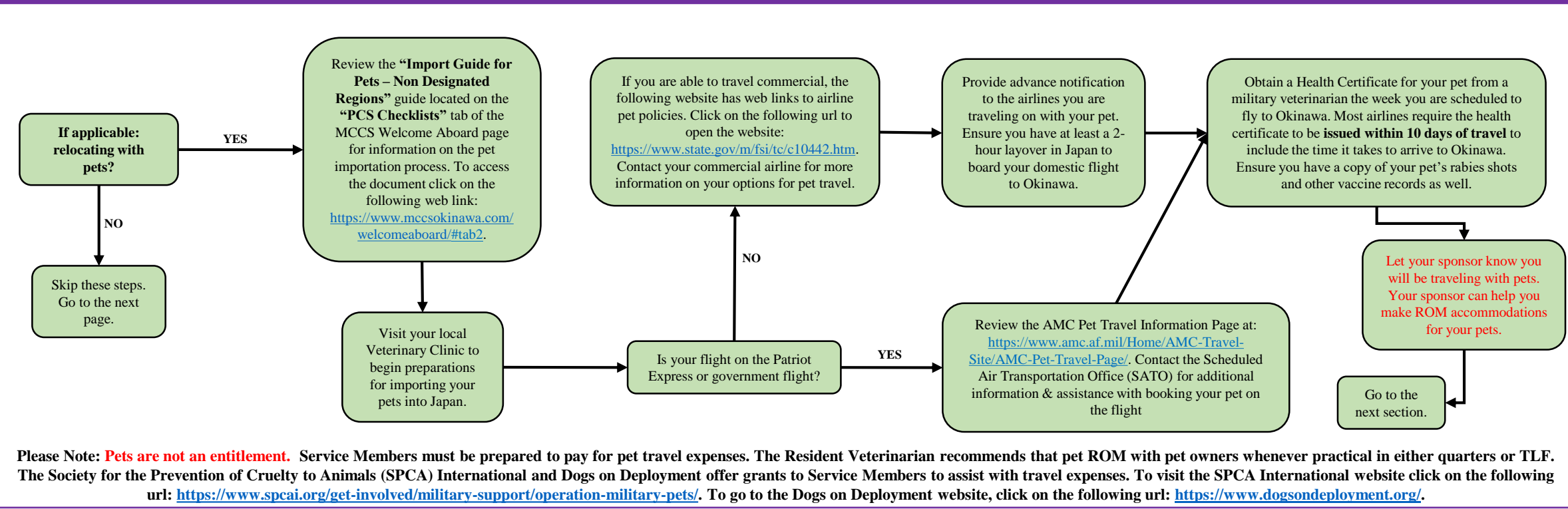
- ❖ Electronic Welcome Aboard Package
- ❖ Overseas Suitability Screening (OSS)
- ❖ Passports
- ❖ Dependent Entry Approval (DEA)
- ❖ Transfer Information Sheet (TIS)
- ❖ Passenger Reservation Request (PRR)
- ❖ Sponsorship Request Form



Greater than Six Months:

Topics Covered:

- ❖ Pet Importation

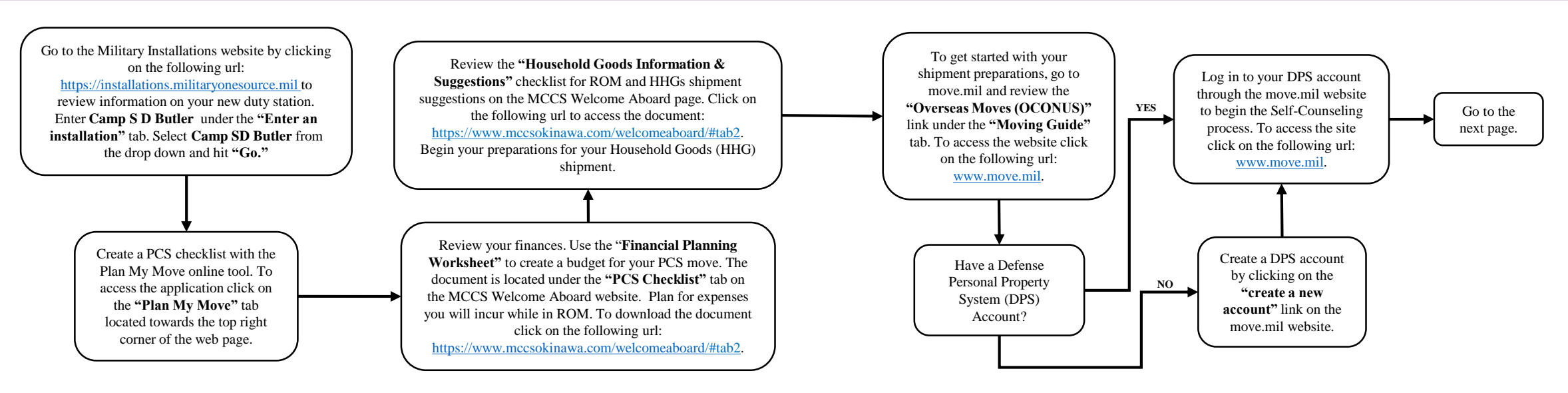


Please Note: Pets are not an entitlement. Service Members must be prepared to pay for pet travel expenses. The Resident Veterinarian recommends that pet ROM with pet owners whenever practical in either quarters or TLF. The Society for the Prevention of Cruelty to Animals (SPCA) International and Dogs on Deployment offer grants to Service Members to assist with travel expenses. To visit the SPCA International website click on the following url: <https://www.spcai.org/get-involved/military-support/operation-military-pets/>. To go to the Dogs on Deployment website, click on the following url: <https://www.dogsondeployment.org/>.

Three to Six Months:

Topics Covered:

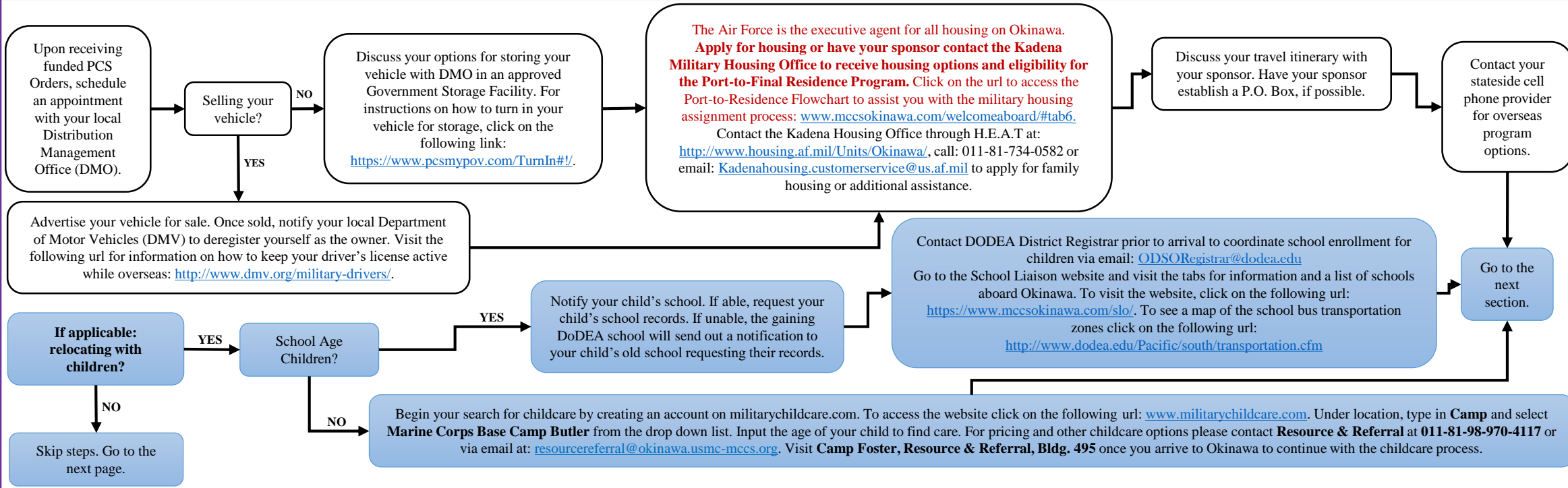
- ❖ Military Installations
- ❖ Plan My Move
- ❖ Financial Worksheet
- ❖ Household Goods Shipment (HHG)



One to Two Months:

Topics Covered:

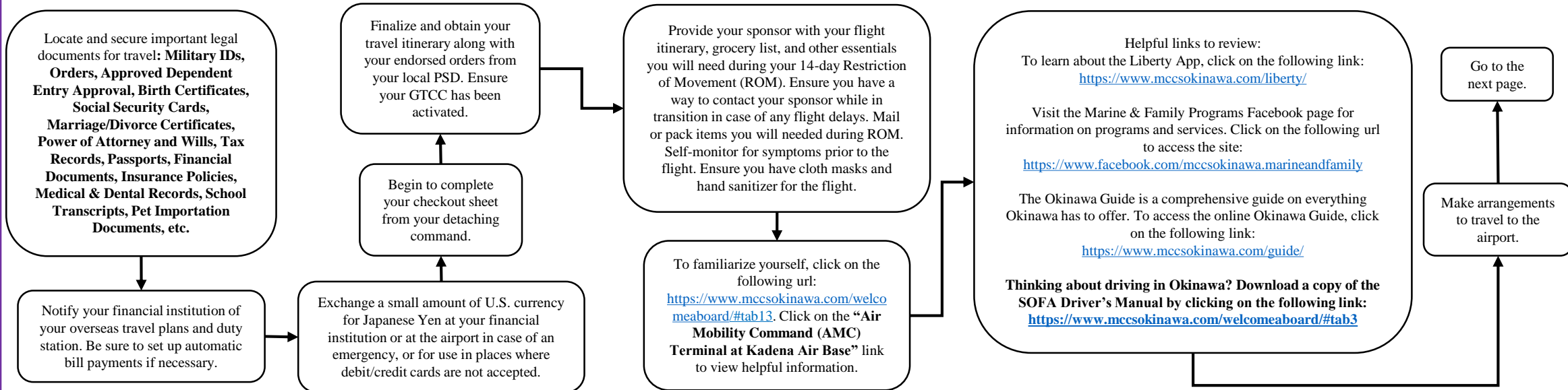
- ❖ Finalizing HHG Shipment
- ❖ Storing Privately Owned Vehicle
- ❖ Housing
- ❖ Sponsor Responsibilities
- ❖ Schools & Childcare



Less than Thirty Days:

Topics Covered:

- ❖ Important Documents
- ❖ Setting up Finances
- ❖ Checkout Process
- ❖ Sponsor Notification
- ❖ Travel and Arrival
- ❖ Helpful Links



- Arrival:**
- Topics Covered:**
- ❖ 14-Day ROM
 - ❖ Checking Into Lodging
 - ❖ Checking Into Housing
 - ❖ CFAO Indoc
 - ❖ Newcomers' Orientation
 - ❖ SOFA Driver's License
 - ❖ Check-In with the CPPA

