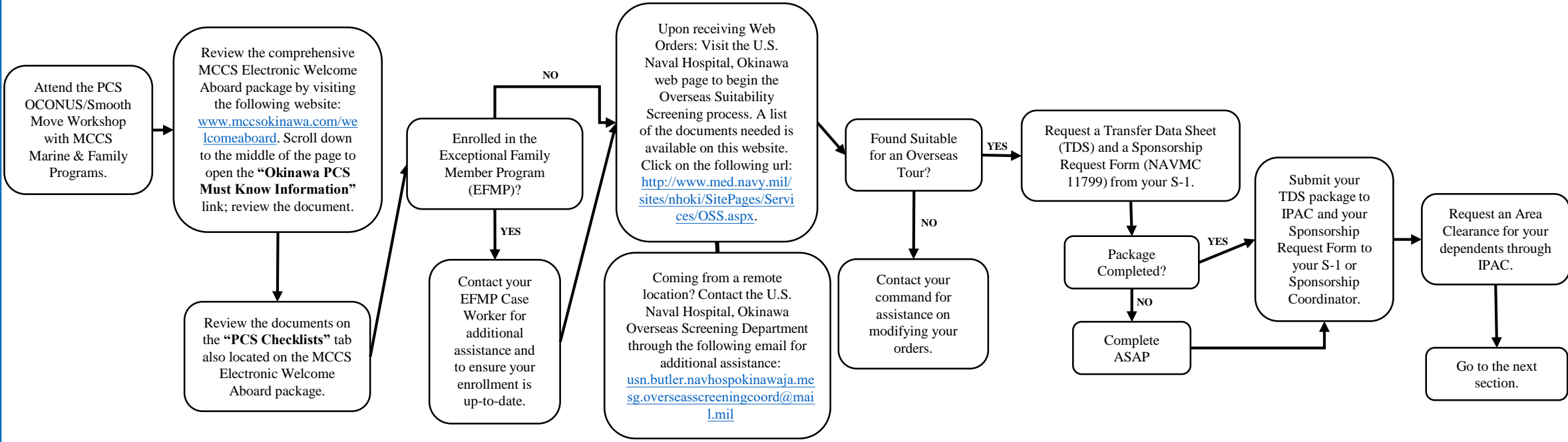


Less than 6 Months:

Topics Covered:

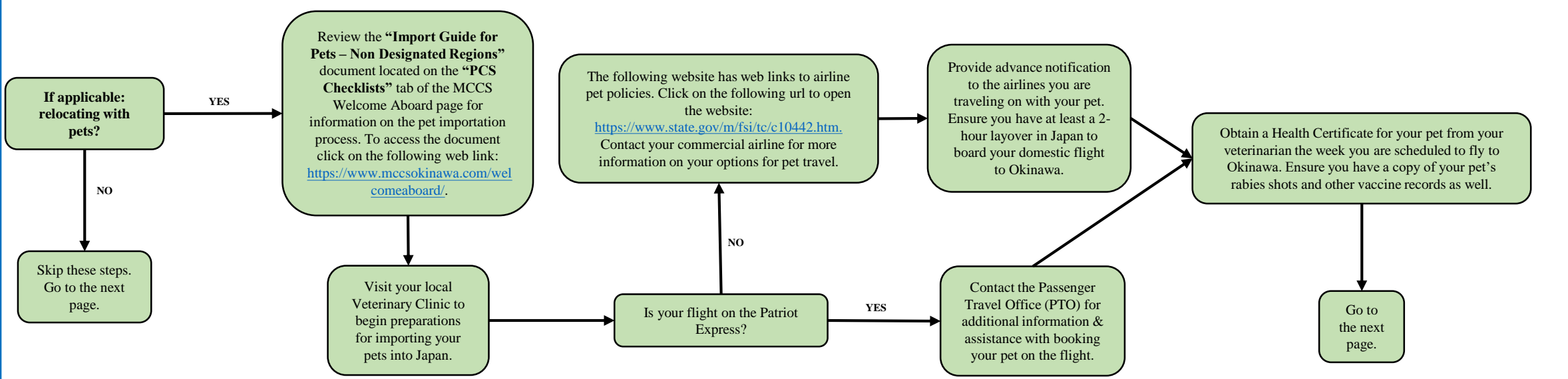
- ❖ Electronic Welcome Aboard Package
- ❖ Medical Overseas Screening
- ❖ Transfer Data Sheet (TDS) Package and Sponsorship Request Form
- ❖ Area Clearance



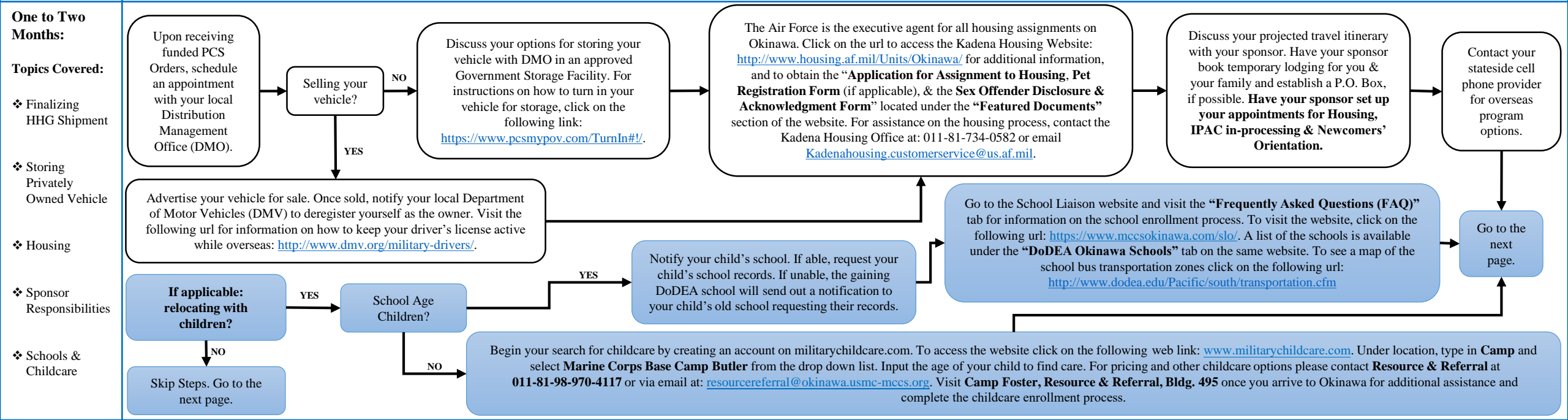
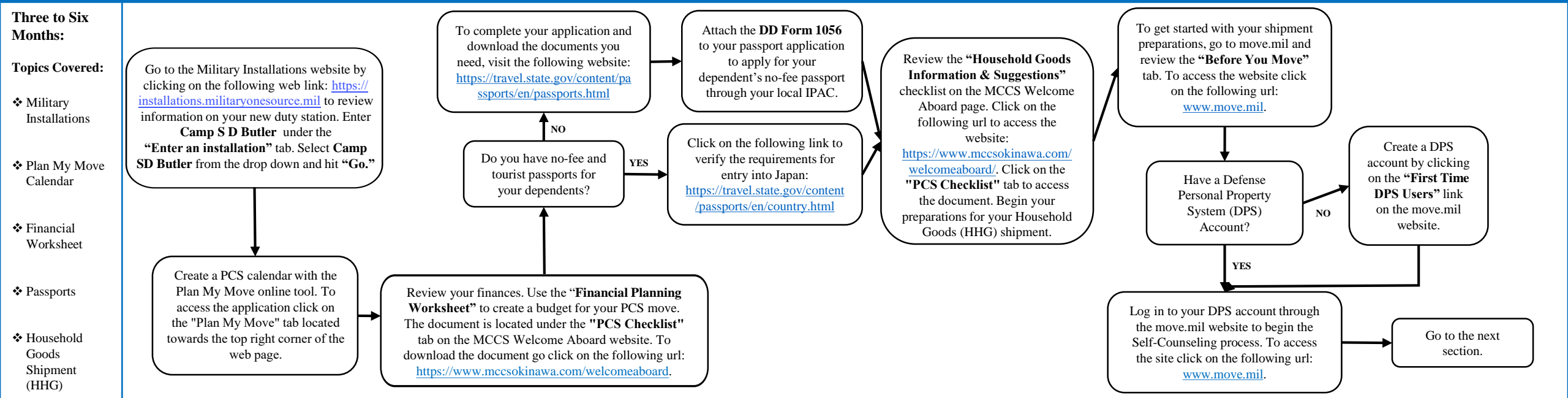
Greater than 6 Months:

Topics Covered:

- ❖ Pet Importation



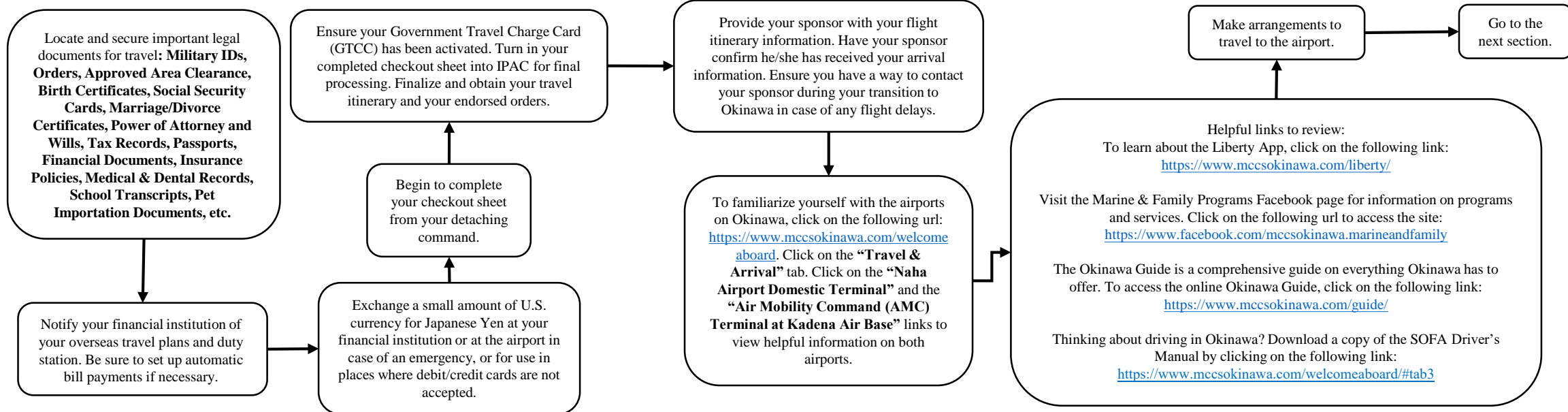
Please Note: Pets are not an entitlement. Service Members must be prepared to pay for pet travel expenses. The Society for the Prevention of Cruelty to Animals (SPCA) International and Dogs on Deployment offer grants to Service Members to assist with travel expenses. To visit the SPCA International website click on the following url: <https://www.spcai.org/get-involved/military-support/operation-military-pets/>. To go to the Dogs on Deployment website, click on the following url: <https://www.dogsondeployment.org/>.



Less Than Thirty Days:

Topics Covered:

- ❖ Important Documents
- ❖ Setting Up Finances
- ❖ Checkout Process
- ❖ Sponsor Notification
- ❖ Travel and Arrival
- ❖ Helpful Links



Arrival:

Topics Covered:

- ❖ Meeting Sponsor
- ❖ Checking into Lodging
- ❖ Checking-In with Housing
- ❖ TLA Entitlements
- ❖ Newcomers' Orientation Welcome Aboard
- ❖ SOFA Driver's License
- ❖ Check-In with IPAC

