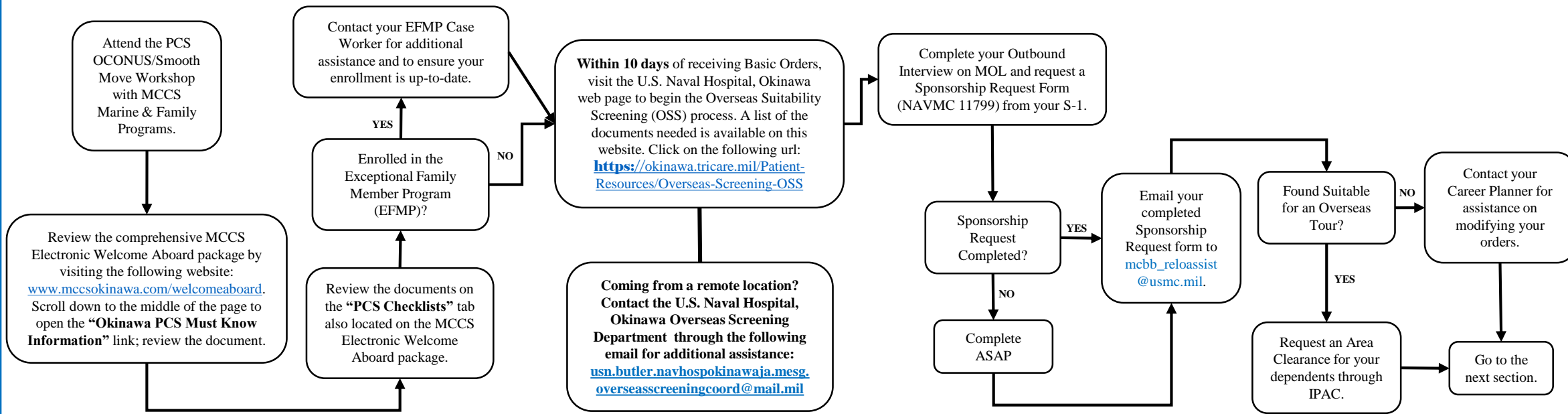


**Once orders are received:**

**Topics Covered:**

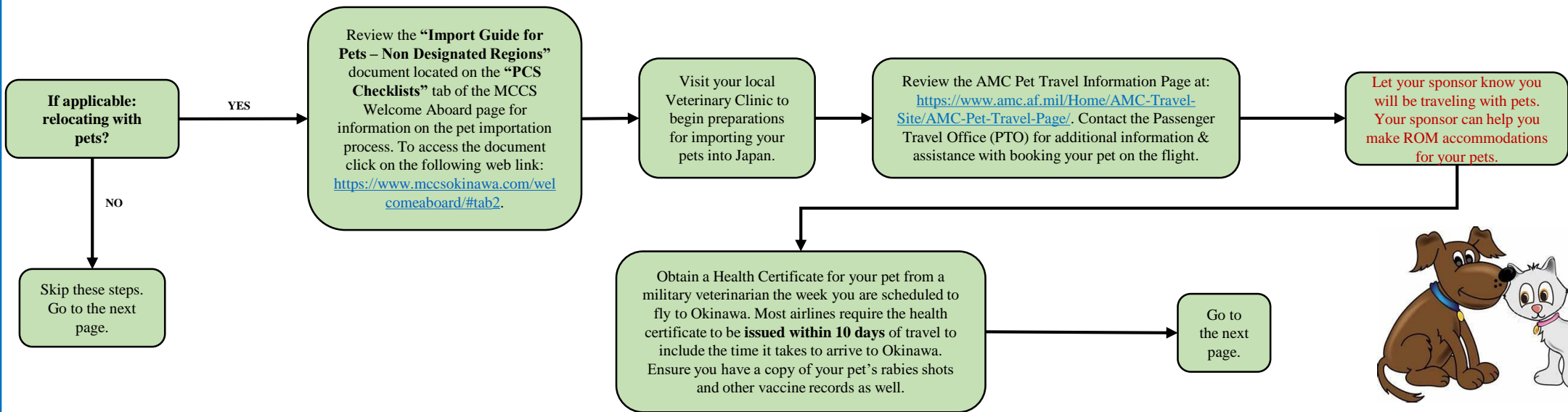
- ❖ Electronic Welcome Aboard Package
- ❖ Overseas Suitability Screening (OSS)
- ❖ Outbound Interview on MOL and Sponsorship Request Form
- ❖ Area Clearance



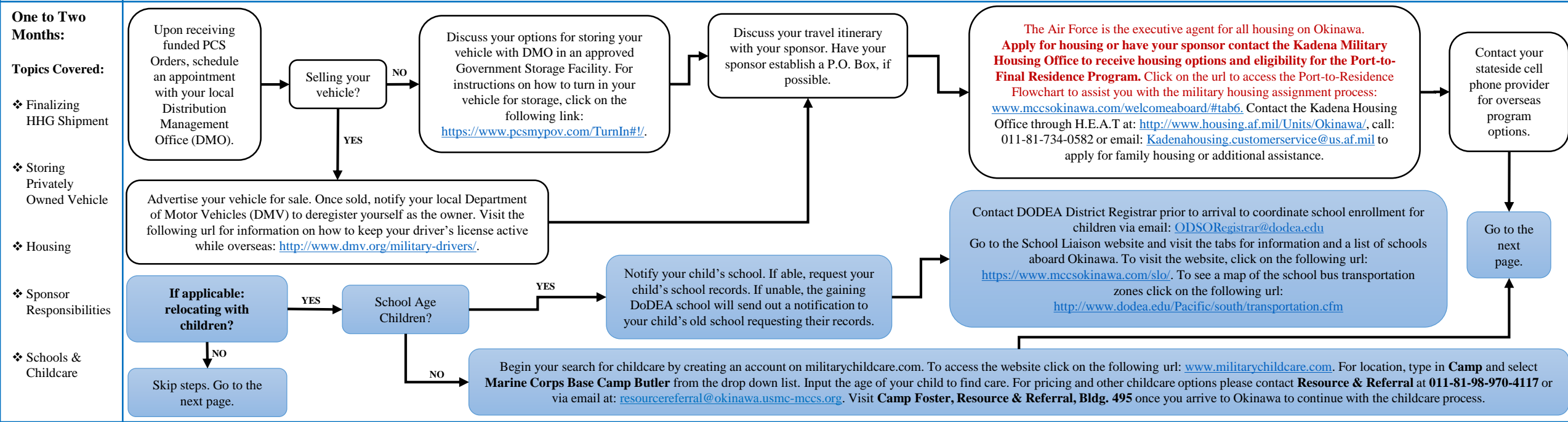
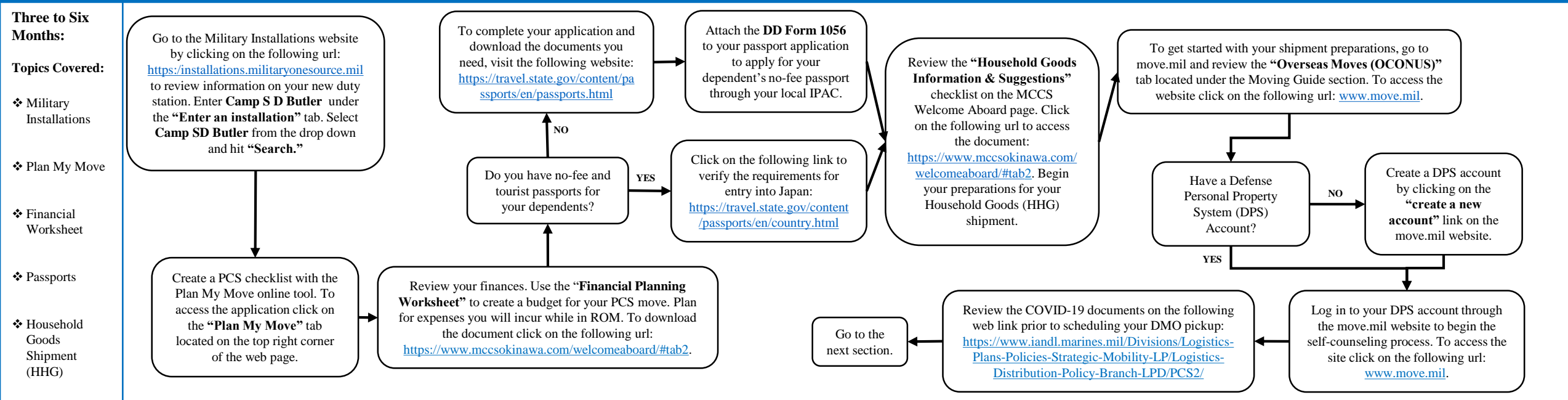
**Greater than 6 Months:**

**Topics Covered:**

- ❖ Pet Importation



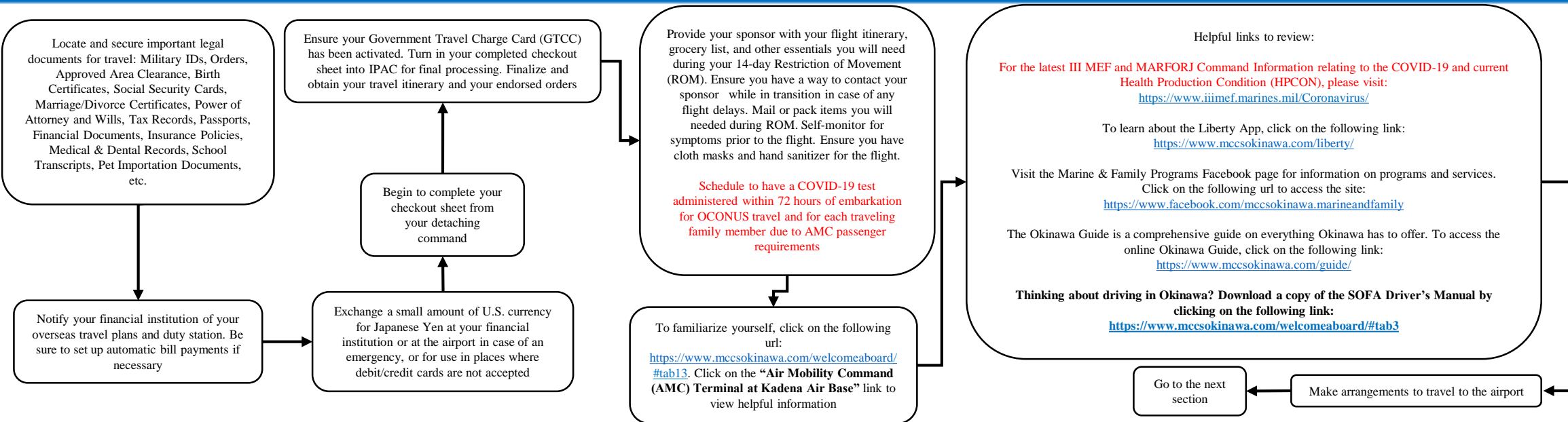
**Please Note: Pets are not an entitlement.** Service Members must be prepared to pay for pet travel expenses. Resident Veterinarian recommends that pets ROM with owners whenever practical in either quarters or TLF. The Society for the Prevention of Cruelty to Animals (SPCA) International and Dogs on Deployment offer grants to Service Members to assist with travel expenses. To visit the SPCA International website click on the following url: <https://www.spcai.org/get-involved/military-support/operation-military-pets/>. To go to the Dogs on Deployment website, click on the following url: <https://www.dogsondeployment.org/>.



## Less Than Thirty Days:

### Topics Covered:

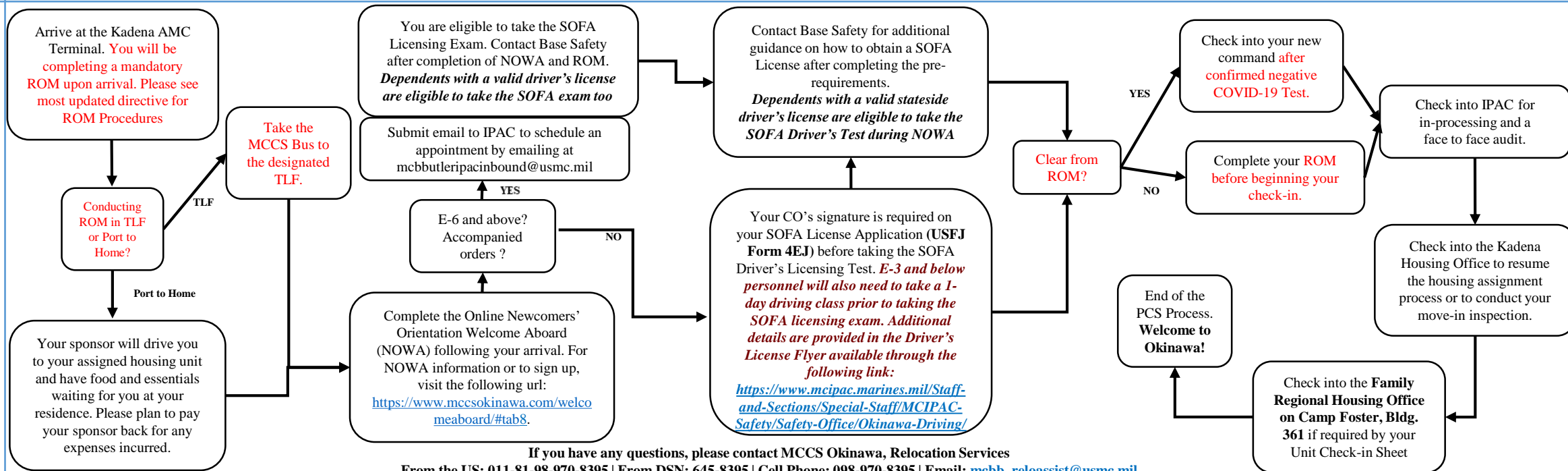
- ❖ Important Documents
- ❖ Setting Up Finances
- ❖ Checkout Process
- ❖ Sponsor Notification
- ❖ Travel and Arrival
- ❖ Helpful Links



## Arrival:

### Topics Covered:

- ❖ Bus Transport
- ❖ Checking into Housing/14 day ROM
- ❖ Newcomers' Orientation Welcome Aboard
- ❖ SOFA Driver's License
- ❖ Check-In with Housing
- ❖ Check-In with IPAC



If you have any questions, please contact MCCS Okinawa, Relocation Services

From the US: 011-81-98-970-8395 | From DSN: 645-8395 | Cell Phone: 098-970-8395 | Email: [mccb\\_reloassist@usmc.mil](mailto:mccb_reloassist@usmc.mil)