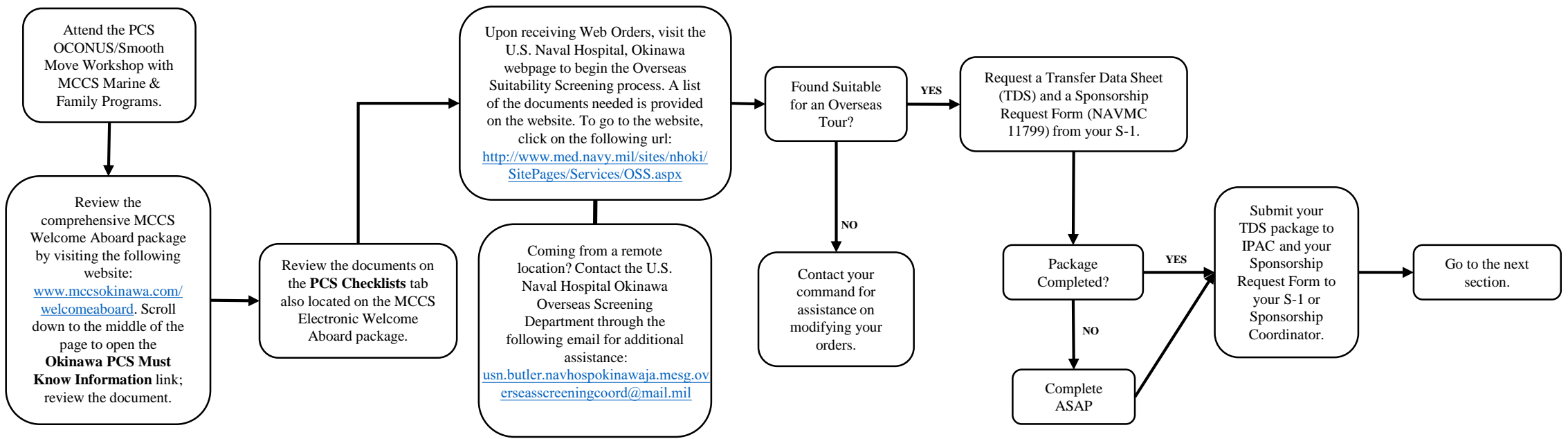


Less than Six Months:

Topics Covered:

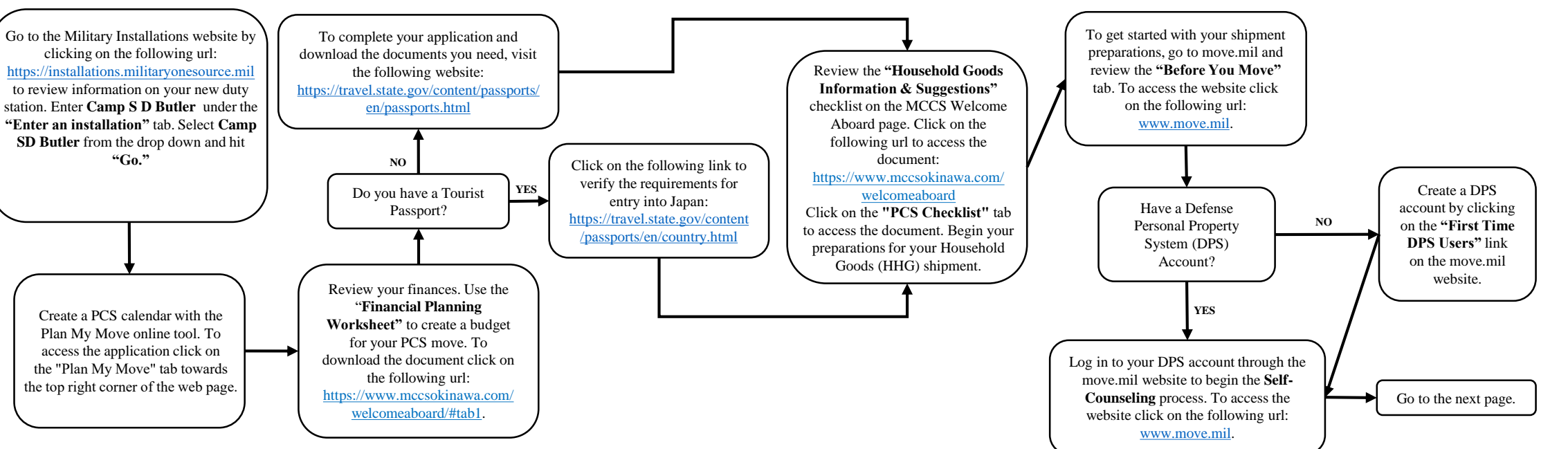
- ❖ Electronic Welcome Aboard Package
- ❖ Medical Overseas Screening
- ❖ Transfer Data Sheet (TDS) Package & Sponsorship Request Form



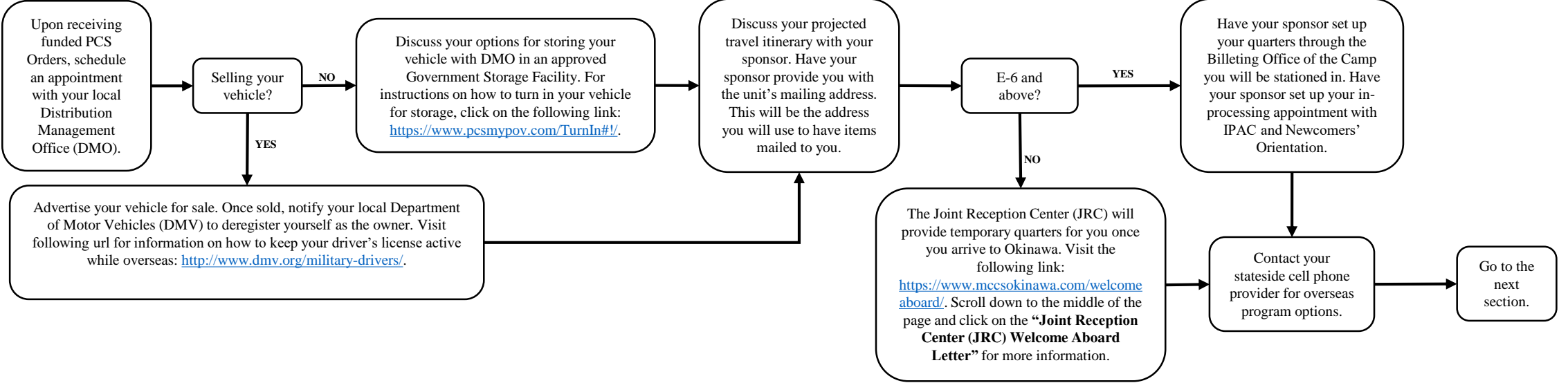
Three to Six Months:

Topics Covered:

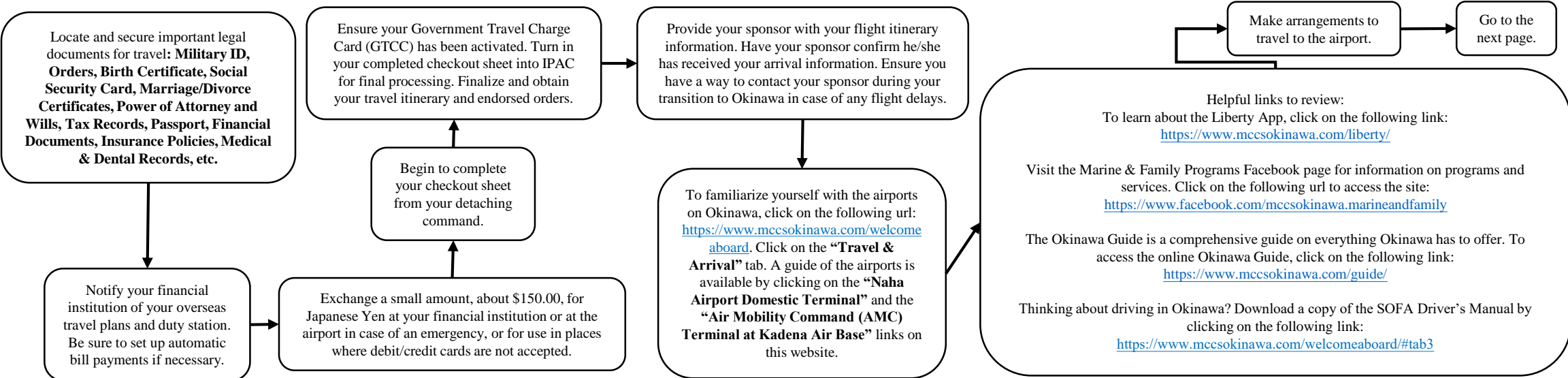
- ❖ Military Installations
- ❖ Plan My Move Calendar
- ❖ Financial Worksheet
- ❖ Passport
- ❖ Household Goods Shipment (HHG)



- One to Two Months:**
- Topics Covered:**
- ❖ Finalizing HHG Shipment
 - ❖ Storing Privately Owned Vehicle
 - ❖ Billeting Information
 - ❖ The Joint Reception Center (JRC)
 - ❖ Sponsor Responsibilities



- Less than Thirty Days:**
- Topics Covered:**
- ❖ Important Documents
 - ❖ Setting Up Finances
 - ❖ Checkout Process
 - ❖ Sponsor Notification
 - ❖ Travel and Arrival
 - ❖ Helpful Links



Arrival:

Topics Covered:

- ❖ Flying into Okinawa
- ❖ Meeting Sponsor
- ❖ Checking into Billeting or the Joint Reception Center (JRC)
- ❖ Newcomers' Orientation Welcome Aboard
- ❖ SOFA Driver's License
- ❖ Check-In with IPAC

