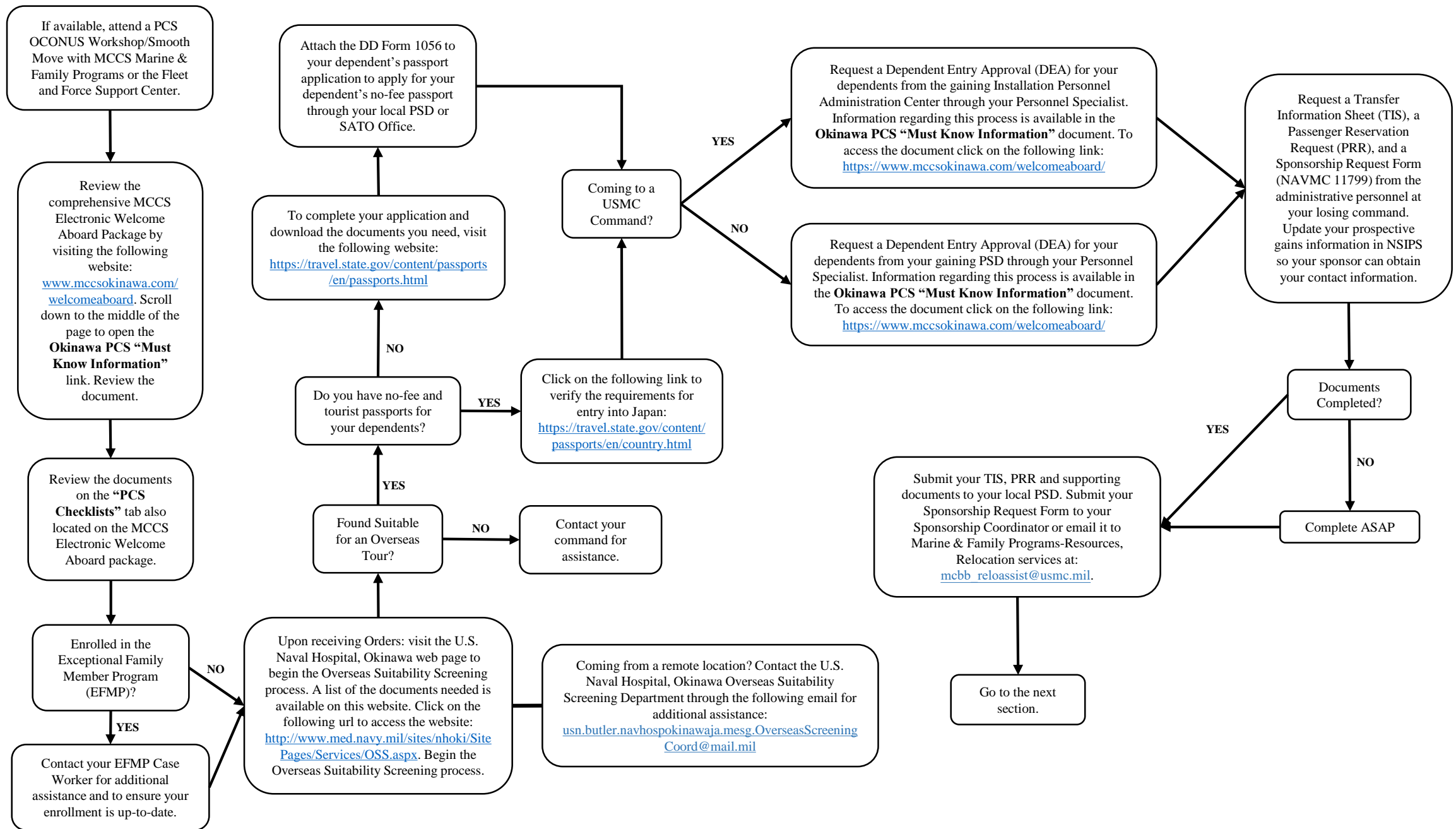


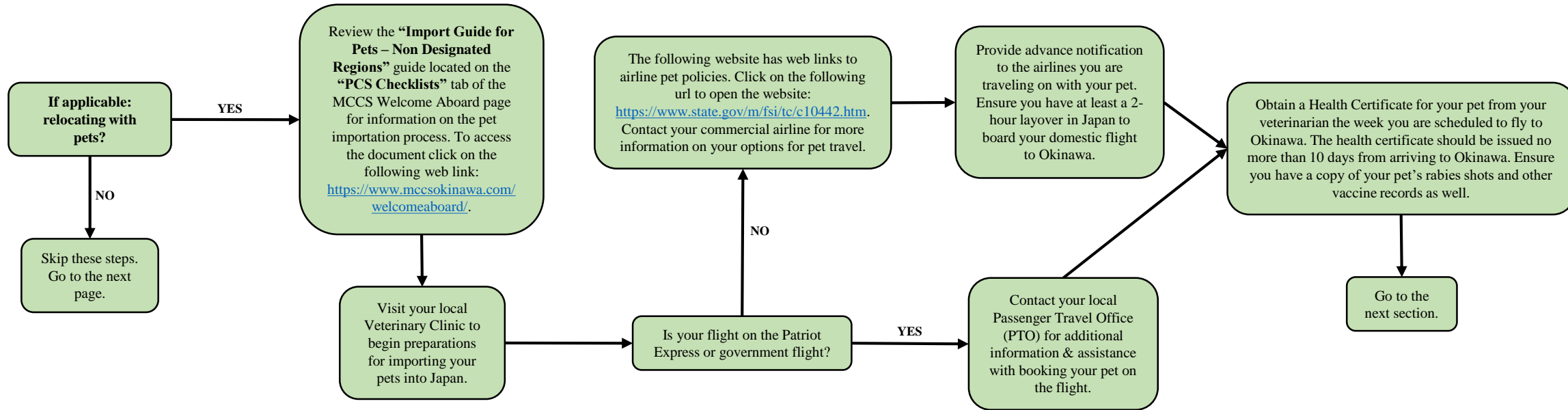
Less than Six Months:

Topics Covered:

- ❖ Electronic Welcome Aboard Package
- ❖ Exceptional Family Member Program (EFMP)
- ❖ Overseas Suitability Screening
- ❖ Passports
- ❖ Dependent Entry Approval
- ❖ Transfer Information Sheet (TIS)
- ❖ Passenger Reservation Request (PRR)
- ❖ Sponsorship Request Form



**Greater than
Six Months:**
**Topics
Covered:**

 ❖ Pet
Importation


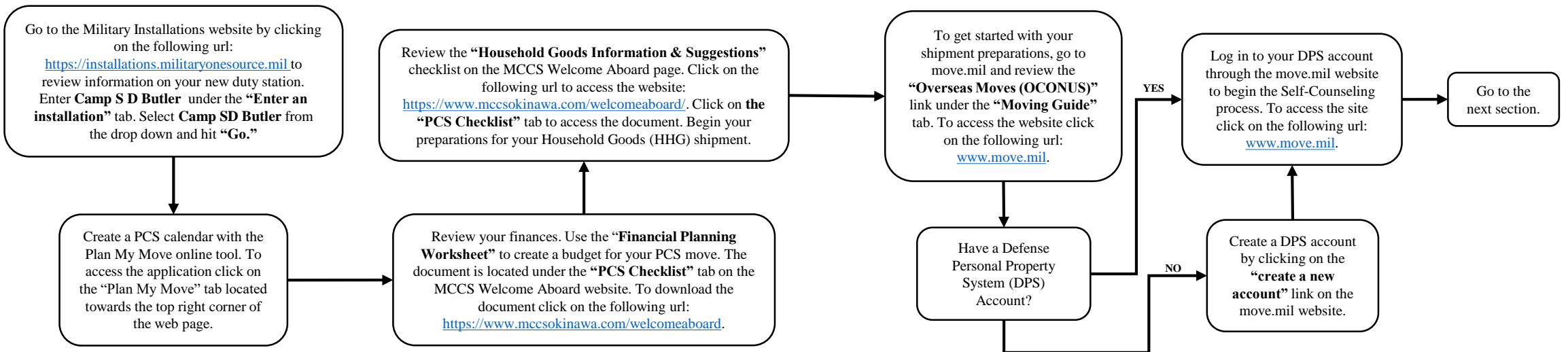
Please Note: Pets are not an entitlement. Service Members must be prepared to pay for pet travel expenses. The Society for the Prevention of Cruelty to Animals (SPCA) International and Dogs on Deployment offer grants to Service Members to assist with travel expenses. To visit the SPCA International website click on the following url: <https://www.spcai.org/get-involved/military-support/operation-military-pets/>. To go to the Dogs on Deployment website, click on the following url: <https://www.dogsondeployment.org/>.

**Three to Six
Months:**
**Topics
Covered:**

 ❖ Military
Installations

 ❖ Plan My
Move
Calendar

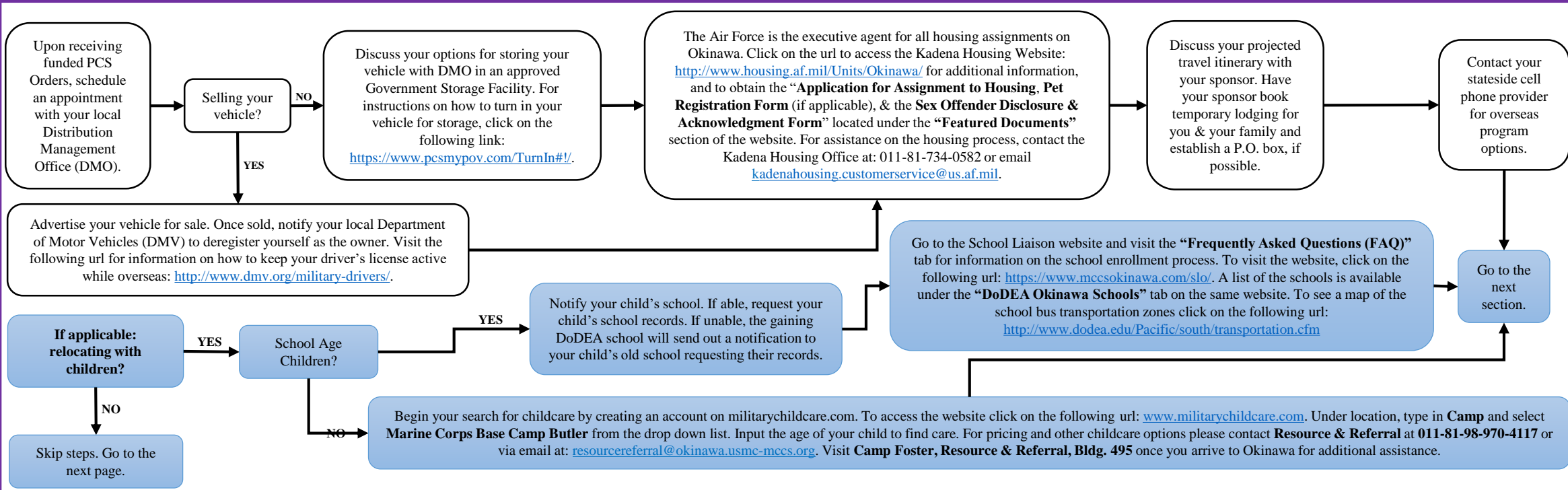
 ❖ Financial
Worksheet

 ❖ Household
Goods
Shipment
(HHG)


One to Two Months:

Topics Covered:

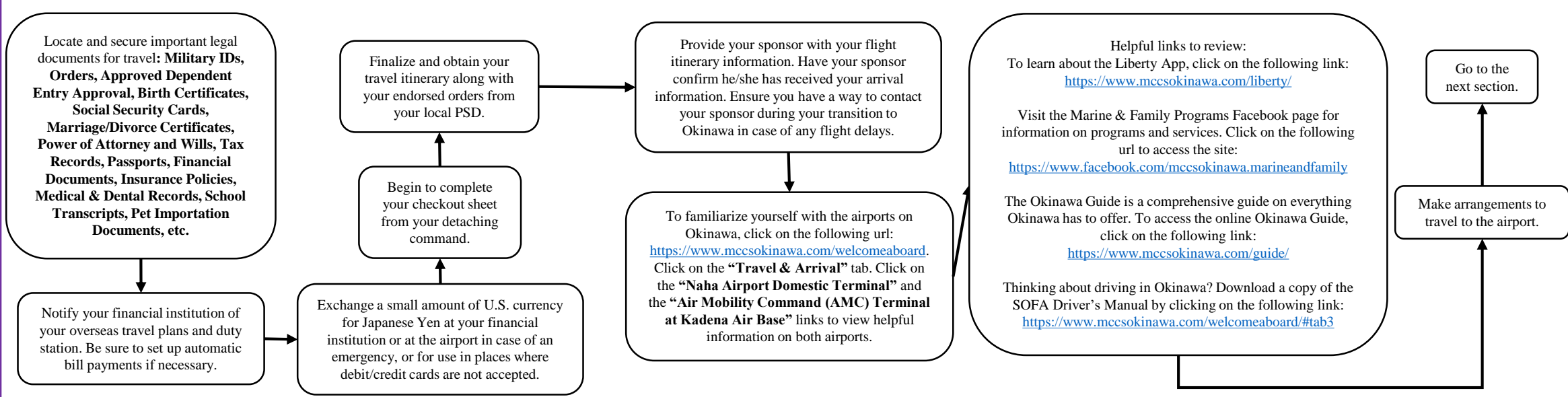
- ❖ Finalizing HHG Shipment
- ❖ Storing Privately Owned Vehicle
- ❖ Housing
- ❖ Sponsor Responsibilities
- ❖ Schools & Childcare



Less than Thirty Days:

Topics Covered:

- ❖ Important Documents
- ❖ Setting up Finances
- ❖ Checkout Process
- ❖ Sponsor Notification
- ❖ Travel and Arrival
- ❖ Helpful Links



- Arrival:**
- Topics Covered:**
- ❖ Meeting Sponsor
 - ❖ Checking Into Lodging
 - ❖ Checking Into Housing
 - ❖ CFAO Indoc
 - ❖ Newcomers' Orientation
 - ❖ SOFA Driver's License
 - ❖ Check-In with CPPA

