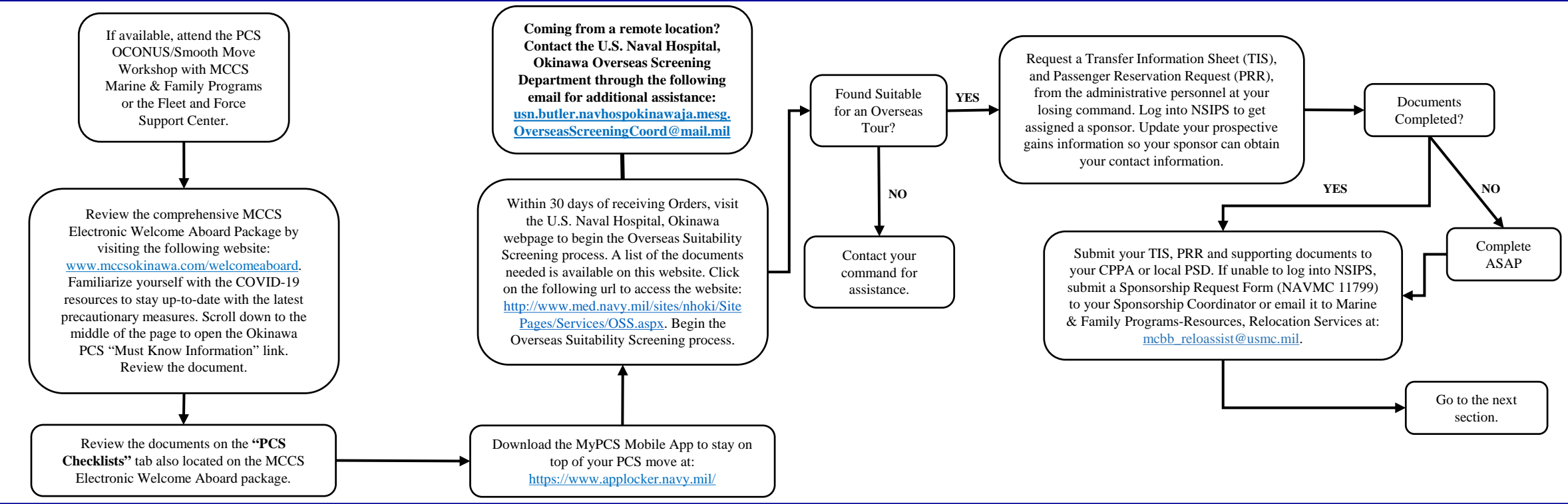


**Less than Six Months:**

**Topics Covered:**

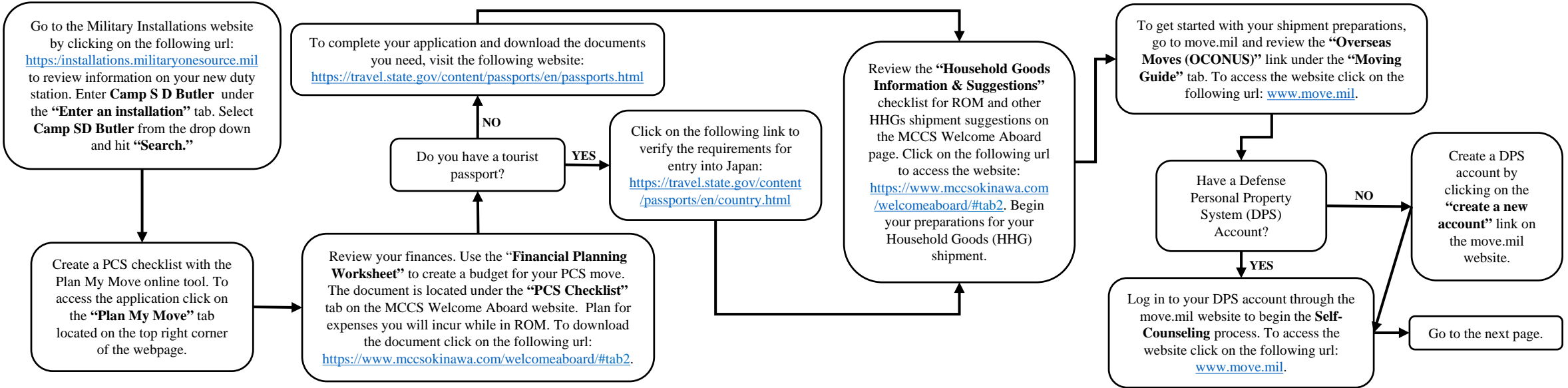
- ❖ Electronic Welcome Aboard Package
- ❖ Overseas Suitability Screening
- ❖ Passports
- ❖ Transfer Information Sheet (TIS)
- ❖ Passenger Reservation Request (PRR)
- ❖ Sponsorship Request Form



**Three to Six Months:**

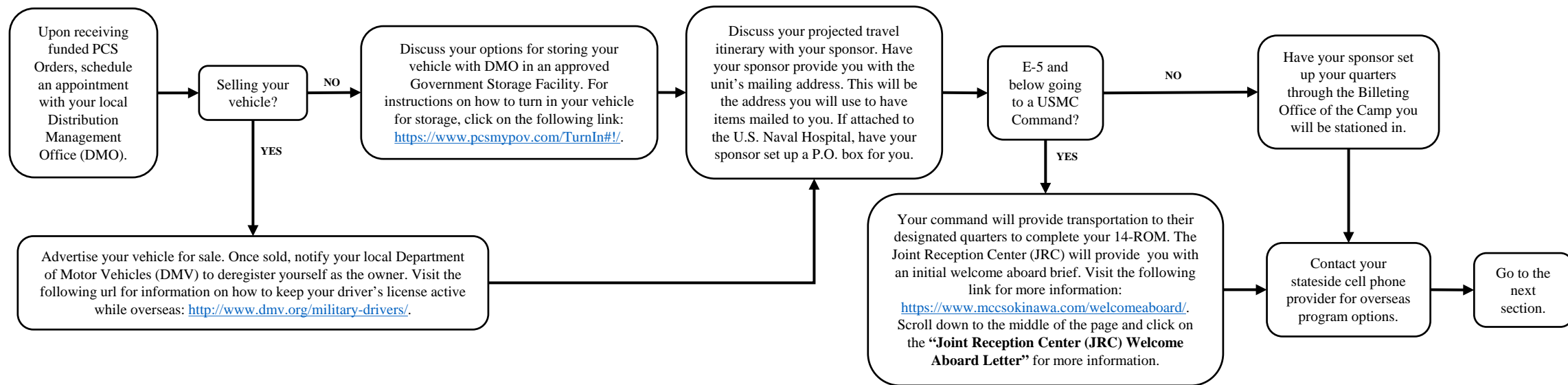
**Topics Covered:**

- ❖ Military Installations
- ❖ Plan My Move
- ❖ Financial Worksheet
- ❖ Passport
- ❖ Household Goods Shipment (HHG)

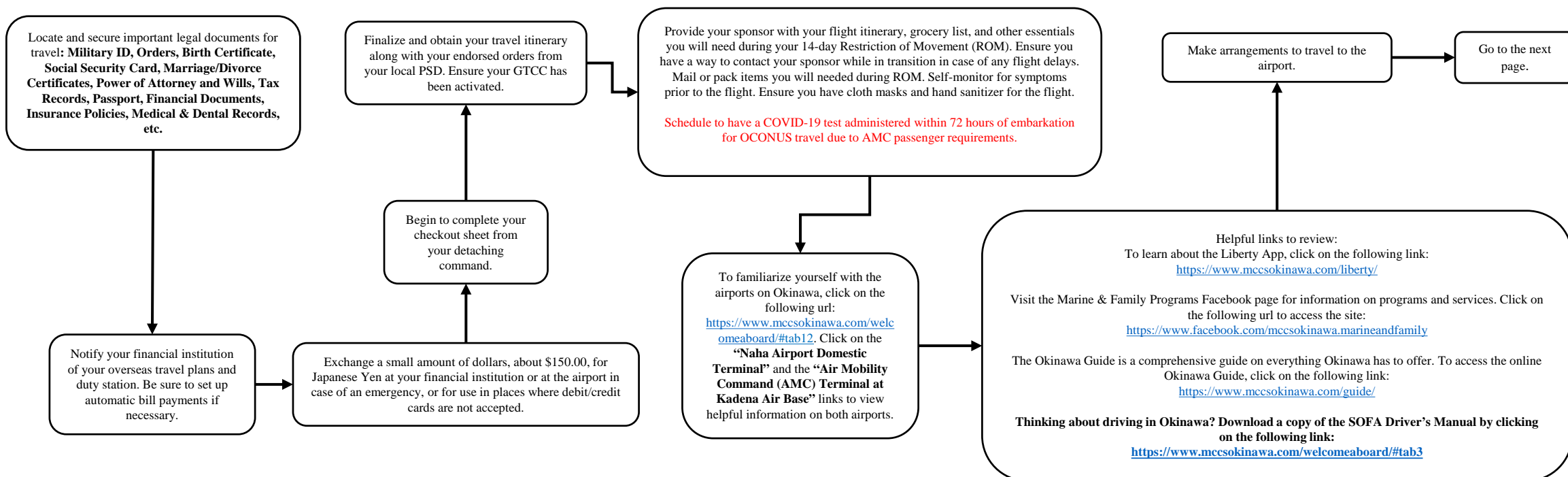


**One to Two Months:****Topics Covered:**

- ❖ Finalizing HHG Shipment
- ❖ Storing Privately Owned Vehicle
- ❖ Billeting Information
- ❖ The Joint Reception Center (JRC)
- ❖ Sponsor Responsibilities

**Less than Thirty Days:****Topics Covered:**

- ❖ Important Documents
- ❖ Setting Up Finances
- ❖ Checkout Process
- ❖ Sponsor Notification
- ❖ Travel and Arrival
- ❖ Helpful Links



**Arrival:**

**Topics Covered:**

- ❖ Flying into Okinawa
- ❖ Meeting Sponsor
- ❖ Quarters and the Joint Reception Center (JRC)
- ❖ CFAO Indoc
- ❖ USNH Indoc
- ❖ Newcomers' Orientation Welcome Aboard
- ❖ SOFA Driver's License
- ❖ Check-In with your Command Pay and Personnel Administrator (CPPA)

**Color Legend**

- Navy Attached to CFAO
- E-6 and above attached to USMC
- Navy Attached to USNH
- E-5 and below attached to USMC

