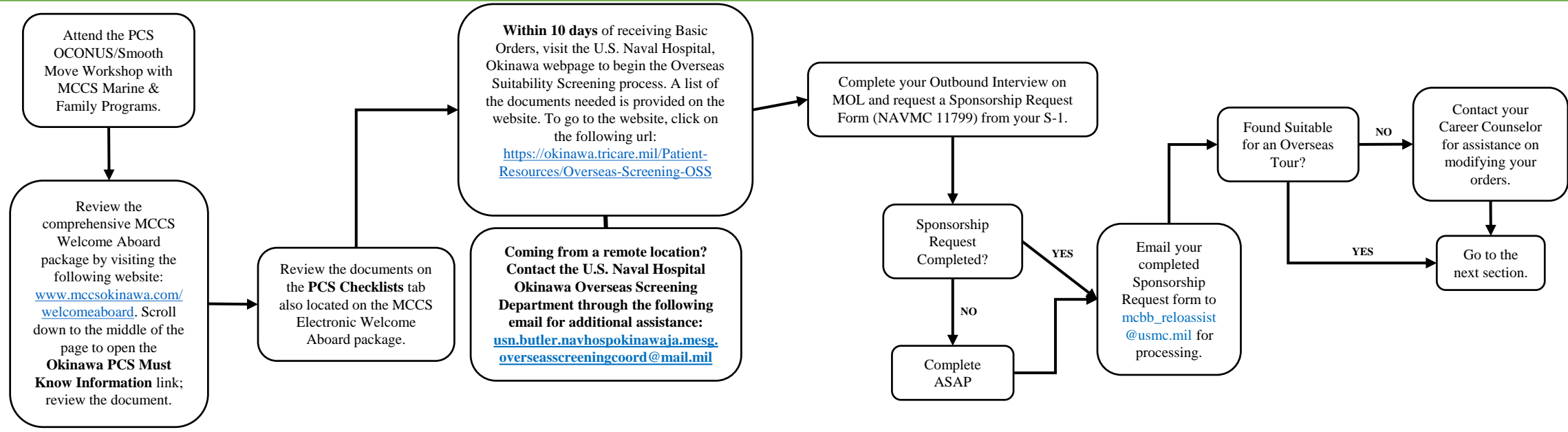


Once orders are received:

Topics Covered:

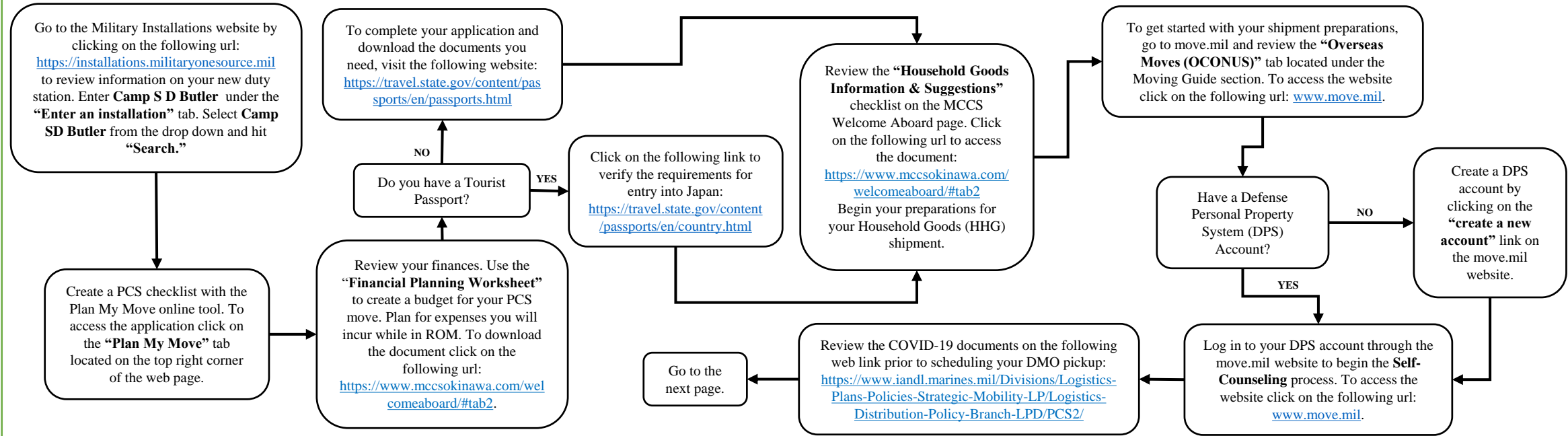
- ❖ Electronic Welcome Aboard Package
- ❖ Overseas Suitability Screening (OSS)
- ❖ Outbound Interview on MOL & Sponsorship Request Form



Three to Six Months:

Topics Covered:

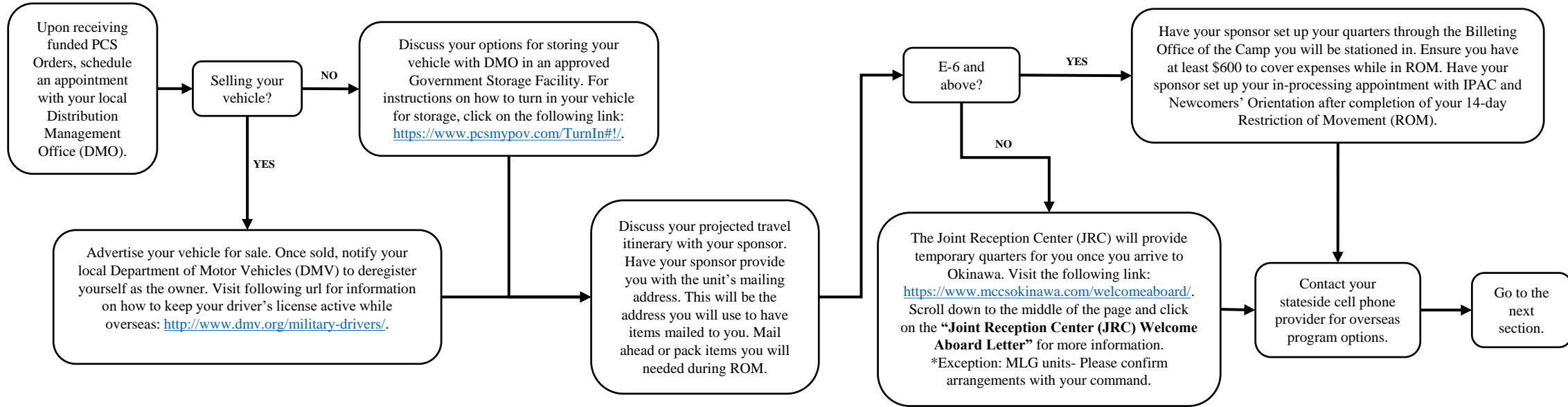
- ❖ Military Installations
- ❖ Plan My Move
- ❖ Financial Worksheet
- ❖ Passport
- ❖ Household Goods Shipment (HHG)



**One to Two Months:**

**Topics Covered:**

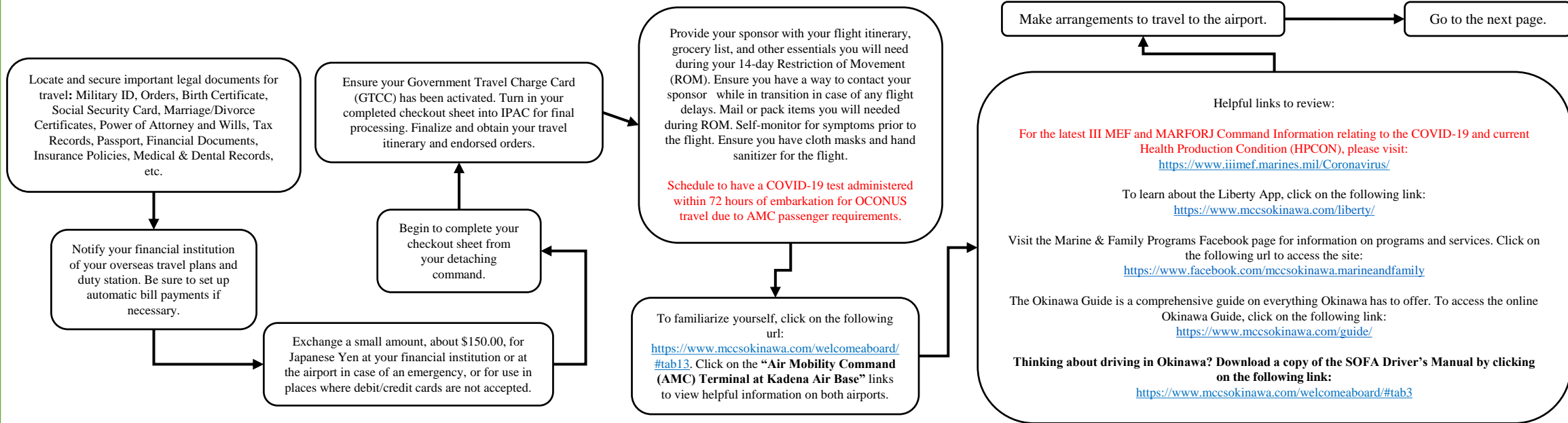
- ❖ Finalizing HHG Shipment
- ❖ Storing Privately Owned Vehicle
- ❖ Billeting Information
- ❖ The Joint Reception Center (JRC)
- ❖ Sponsor Responsibilities



**Less than Thirty Days:**

**Topics Covered:**

- ❖ Important Documents
- ❖ Setting Up Finances
- ❖ Checkout Process
- ❖ Sponsor Notification
- ❖ Travel and Arrival
- ❖ Helpful Links



**Arrival:**

**Topics Covered:**

- ❖ Flying into Okinawa
- ❖ Transport to billeting
- ❖ Checking into Billeting or the Joint Reception Center (JRC)
- ❖ Newcomers' Orientation Welcome Aboard
- ❖ SOFA Driver's License
- ❖ Check-In with IPAC

